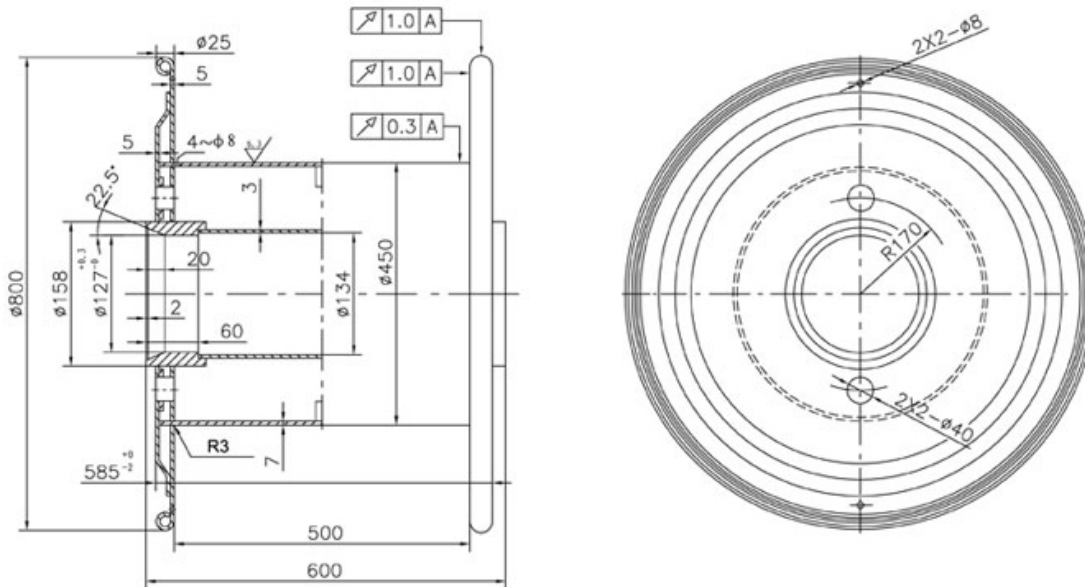


PACKING DRAWING COPPER ROD



Technical specifications:

1. Surface machined to roughness 6.3 as specified.
2. Dynamically balanced to G16 specification .
3. Painted or surface coated as per customer specification .
4. Steel grade Q235.
5. All measurements are shown as mm (metric).

8.0mm

- Coil weight : Max. 4.5 metric tons per pallet (20 metric tons per 20-foot container)
- Inside diameter : 950 mm
- Outside diameter : 1,600 mm
- Height : 700 mm
- Dimension of pallet : 1,550 x 1,550 x 150 (H) mm

